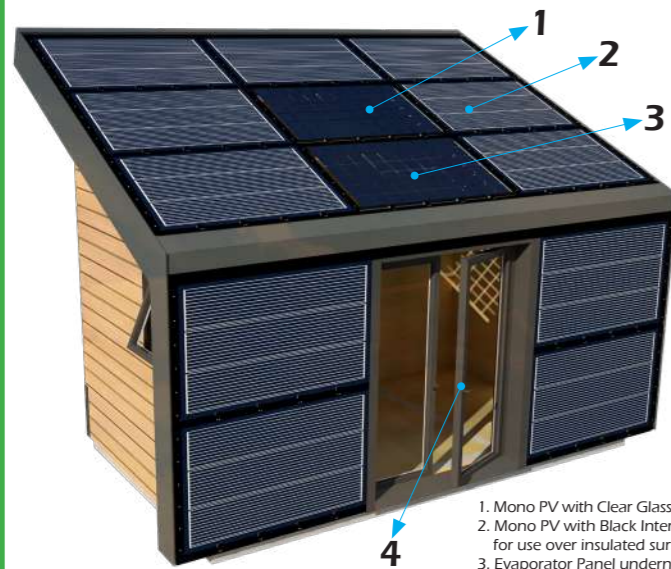


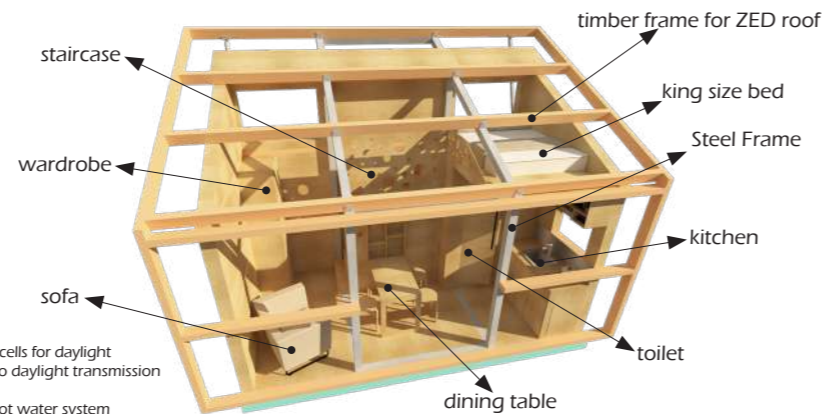
ZED Garden pavilion

Option 1

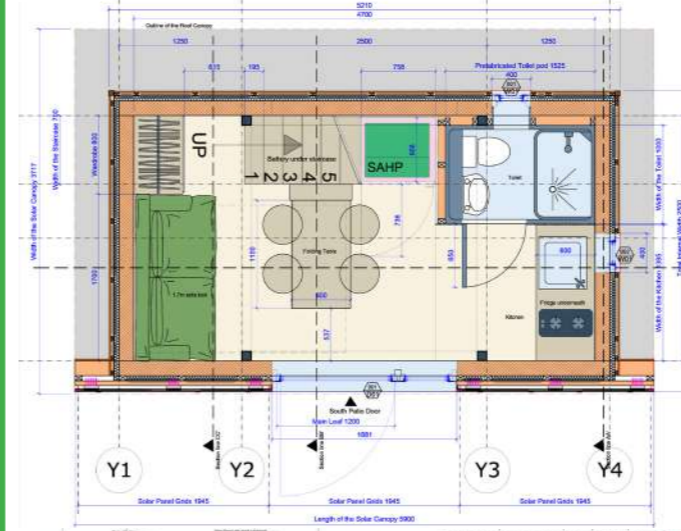
with south patio door
9 inclined panels
(@25 degrees)
+ 4 vertical panels
= 13 panels @ 445Wp
= 5785 watts peak



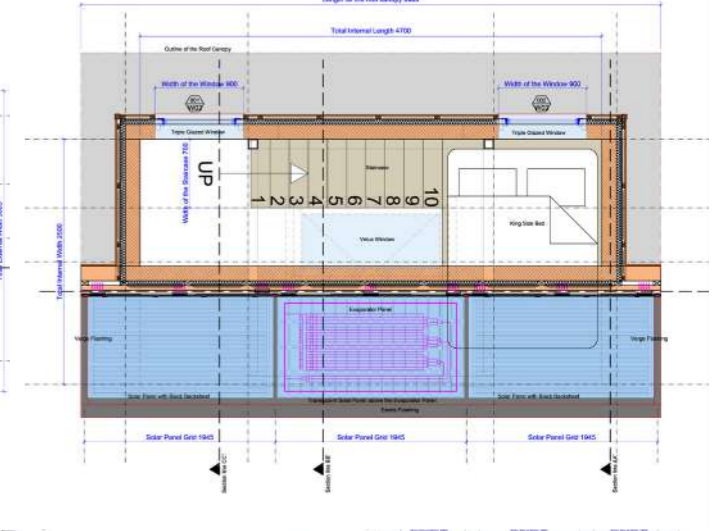
1. Mono PV with Clear Glass between cells for daylight
2. Mono PV with Black Interlayer so no daylight transmission for use over insulated surfaces
3. Evaporator Panel underneath for hot water system
4. Triple Glazed Rational Door Panel



below: lower floor plan(option 1)

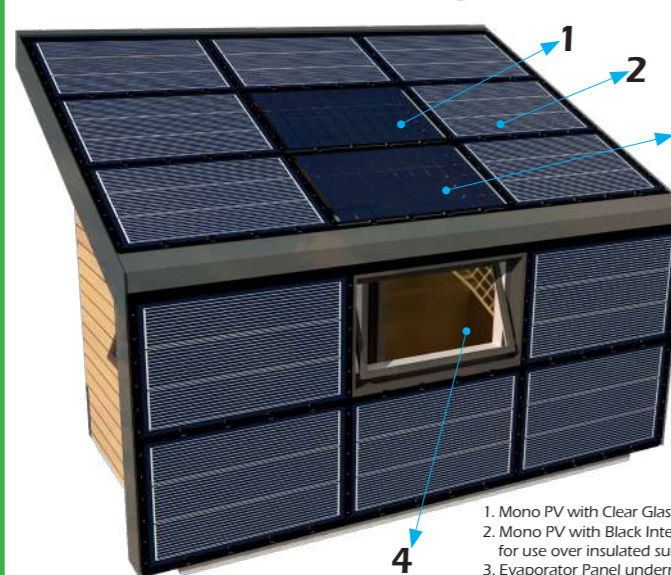


below: upper floor plan(option 1)

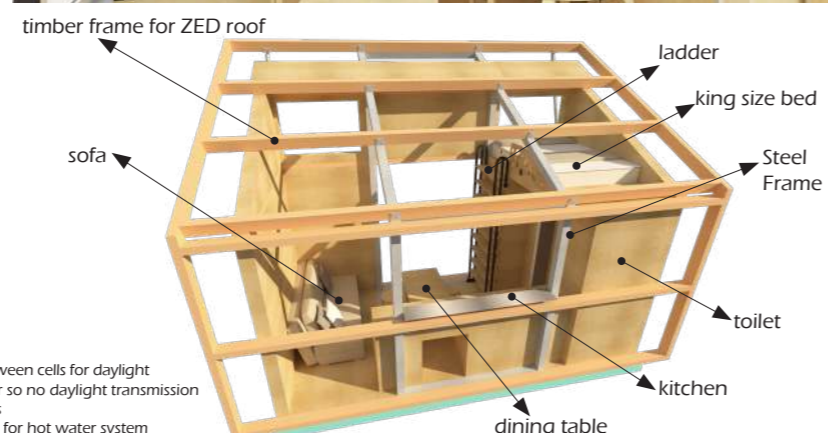


Option 2

with north patio door
9 inclined panels
(@25 degrees)
+ 5 vertical panels
= 14 panels @ 445Wp
= 6230 watts peak



1. Mono PV with Clear Glass between cells for daylight
2. Mono PV with Black Interlayer so no daylight transmission for use over insulated surfaces
3. Evaporator Panel underneath for hot water system
4. Triple Glazed Rational Window Panel



above: long section(option 1)

above: short section(option 1)

above: short section(option 1)

above: south elevation(option 1)